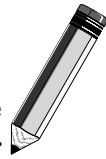


Stems and Flags

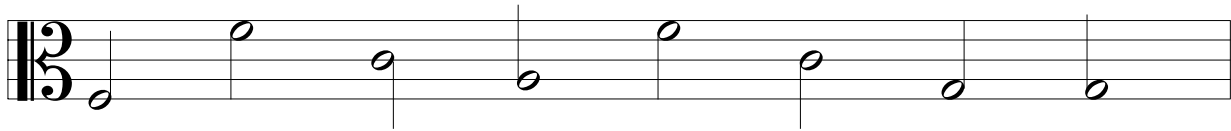


1. Notes with stems look like ρ or \downarrow . They look like the letters “**p**” or “**d**”, never like “**b**” or “**q**.” When you think of a “note”, think of a “note pad” to remember “**p**” and “**d**.”

Write
the answer



Circle the notes that have wrong stems.



2. Notes on the middle line or higher have the stem going down.

Write
the answer



Draw stems on these notes. Make sure the stems go down and the notes look like ρ “**p**”.

